

**PROFILE**

SCALE: HORIZ. 1" = 30'  
VERT. 1" = 30'

Notes: 1. All depths of cover over catch basins.  
2. Elevation of sewer at manholes.  
3. Elevation of ground surface at manholes.

**PLAN**  
SCALE 1" = 80'

- LEGEND**
- GAS
  - WATER
  - S- RS- SEWER (EXIST. & PROPOSED)

NOV 1 1967

SAN BERNARDINO COUNTY ROAD CONTRACT DISTRICT  
STATE OF CALIFORNIA  
**GILBERT STEDMAN**  
PLANS ENGINEER

DESIGNED BY: [illegible]  
TRACED BY: [illegible]  
CHECKED BY: [illegible]

NOTE:  
CITY OF SAN BERNARDINO WILL MAKE NECESSARY CHANGES TO DESIGN OWNED OR CONTROLLED BY THE CITY.

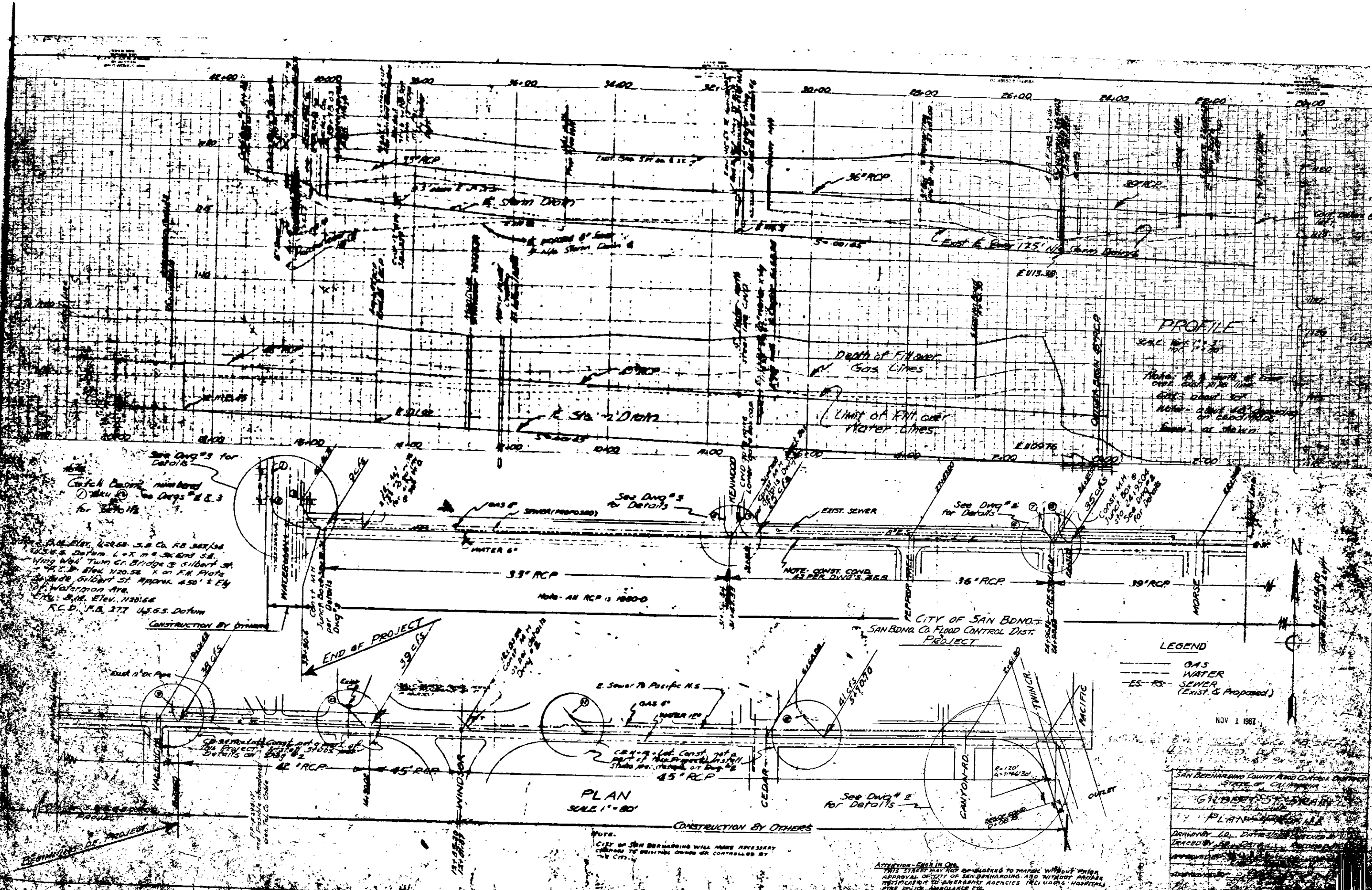
ATTENTION - EYES IN USE  
THIS STREET MAY NOT BE CLOSED TO TRAFFIC WITHOUT PRIOR APPROVAL OFFICE OF SAN BERNARDINO AND WITHOUT PROPER NOTIFICATION TO EMERGENCY AGENCIES INCLUDING FIREMEN, POLICE, AMBULANCE, ETC.

See Dwg # 3 for Details  
Catch Basin numbered  
See Dwg # 3 & 4 for Details

CONSTRUCTION BY OTHERS

END OF PROJECT

CITY OF SAN BERNARDINO  
SAN BERNARDINO CO. FLOOD CONTROL DIST.  
PROJECT



**PROFILE**

SCALE: HORIZ. 1" = 20'  
VERT. 1" = 20'

Notes: 1. All depths of cover over existing lines.  
2. City shall be responsible for all existing lines.  
3. Sewer at station.

**PLAN**  
SCALE 1" = 80'

**LEGEND**

- GAS
- WATER
- S- RS- SEWER (EXIST. & PROPOSED)

NOV 1 1967

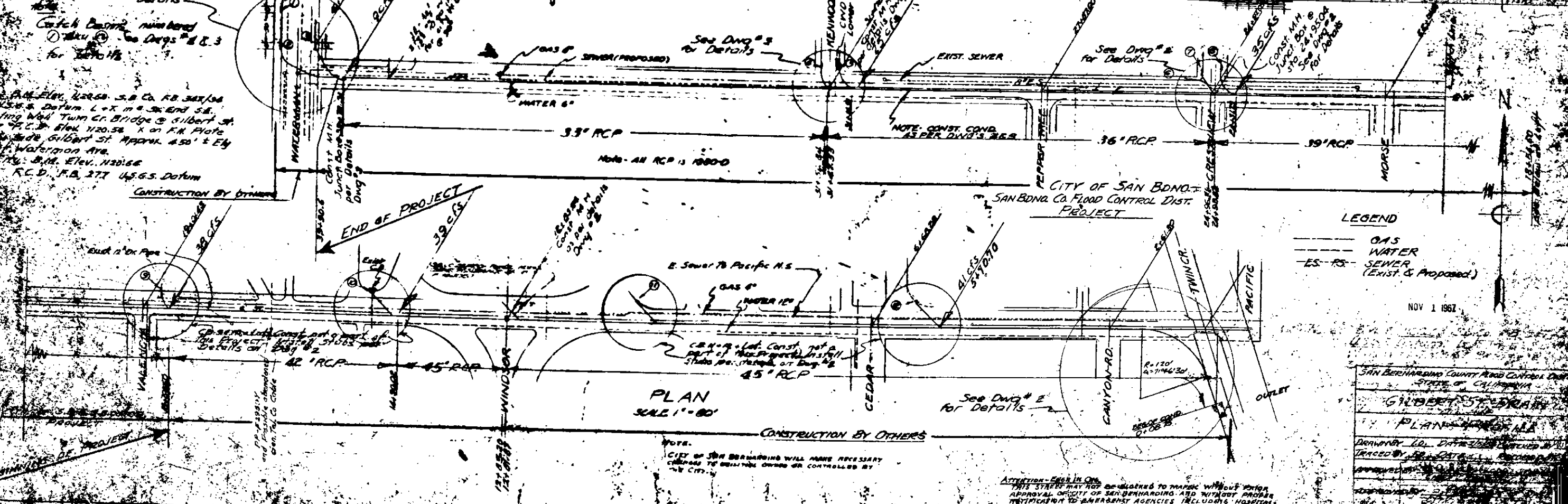
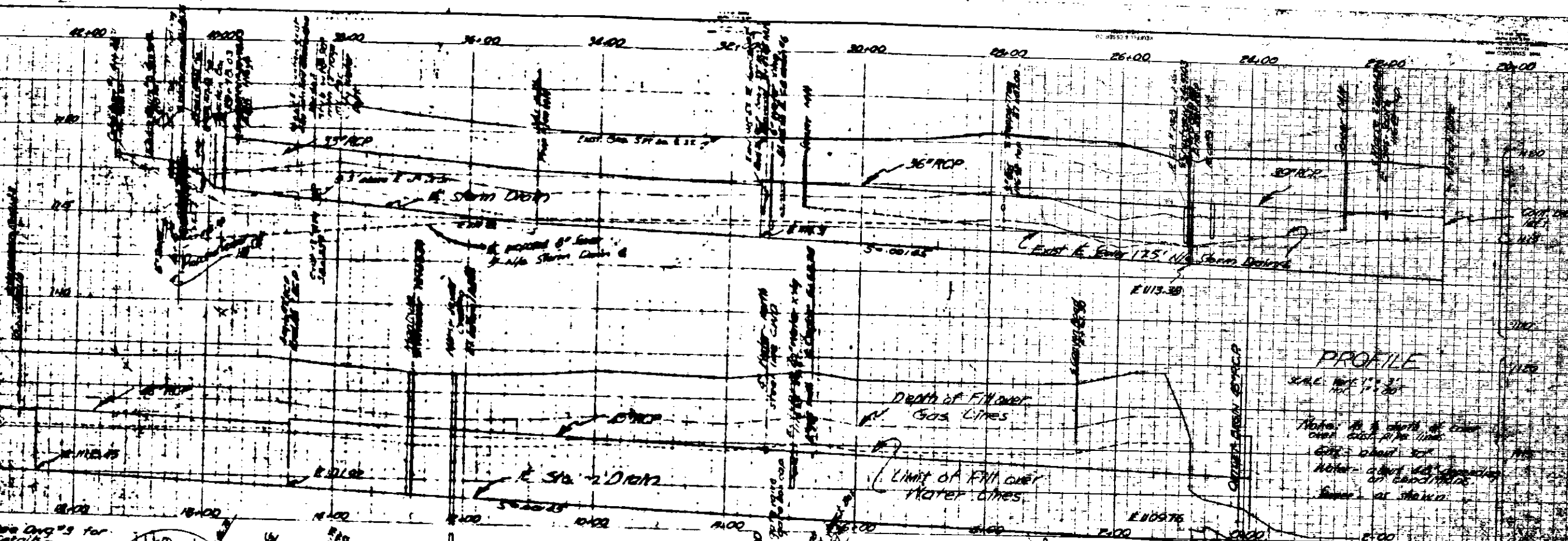
SAN BERNARDINO COUNTY ROAD CONTRACT DISTRICT  
STATE OF CALIFORNIA  
**GILBERT STUBBINS**  
PLANS ENGINEER

DESIGNED BY: [Signature]  
TRACED BY: [Signature]  
CHECKED BY: [Signature]

See Dwg # 2 for Details  
Catch Basin numbered  
See Dwg # 2 & 3  
for details

NOTE:  
CITY OF SAN BERNARDINO WILL MAKE NECESSARY  
CHANGES TO EXISTING OWNED OR CONTROLLED BY  
THE CITY.

Attention - E-1 in O-1  
THIS STREET MAY NOT BE CLOSED TO TRAFFIC WITHOUT PRIOR  
APPROVAL OFFICE OF SAN BERNARDINO AND WITHOUT PROPER  
NOTIFICATION TO EMERGENCY AGENCIES INCLUDING FIRE DEPARTMENT,  
POLICE, AMBULANCE, ETC.



See Dwg # 3 for Details  
Catch Basin numbered  
See Dwg # 2 & 3  
for Details  
P.M. Elev. 1225.58 S.B. Co. F.B. 302/04  
U.S.S. Datum L.O.X. in 1924  
Wing Walk Turn Cr. Bridge @ Gilbert St.  
F.C. Elev. 120.58 X on F.R. Photo  
@ Gilbert St. Approx. 450' E. Ely  
Waterman Ave.  
City B.M. Elev. 120.66  
R.C.D. F.B. 377 U.S.S. Datum

LEGEND  
--- GAS  
--- WATER  
--- ES-RS SEWER (EXIST & PROPOSED)

NOV 1 1967

SAN BERNARDINO COUNTY ROAD CONTRACT DISTRICT  
STATE OF CALIFORNIA  
GILBERT ST. EXTENSION  
PLANS SHEET NO. 112  
DRAWN BY: G. L. DAVIS  
CHECKED BY: J. B. GIBSON  
APPROVED BY: J. B. GIBSON

ATTENTION - EGRESS ONLY  
THIS STREET MAY NOT BE CLOSED TO TRAFFIC WITHOUT PRIOR  
APPROVAL OF CITY OF SAN BERNARDINO AND WITHOUT PROPER  
NOTIFICATION TO EMERGENCY AGENCIES INCLUDING FIRE  
POLICE, POLICE, AMBULANCE, ETC.